

TruPunch:

Punching with potential



Machine Tools/Power Tools
Laser Technology/Electronics
Medical Technology



We set the pace in punching technology.

The TRUMPF Group ranks among the world's leading manufacturers of production technology. Technical solutions for our customers have been our focus since 1923. Our innovations lead the way in machine tools and power tools for sheet metal fabrication and laser and medical technology. Milestones in the punching field include a patent for coordinate guidance in 1955 and the first nearly fully automated punching machine in 1968.

We continually develop new processes and more powerful machines to create user-oriented innovations. Our corporate image is characterized by the highest level of quality and reliability in customer care. You can count on us for every project. Our comprehensive services range from planning your production plant to optimizing your workflow. Even if you just want information about a new tool – we speak your language.

Contents:

Page 4	Technology does it.
Page 8	TruPunch 1000
Page 12	TruPunch 2020
Page 16	TruPunch 3000
Page 20	TruPunch 5000
Page 26	Automation: Components that pay off.
Page 32	TruServices: Programmed for success with TruTops.
Page 34	TruServices: We are there for you.

TruPunch 1000: Small and uncomplicated.

The TruPunch 1000 can handle all tool technologies and it is simple to operate.



TruPunch 2020: Compact and automated.

The TruPunch 2020 is suitable for processing small and mid-size runs. Its space-saving automation is integrated into the machine concept.



TruPunch 3000: Versatile with automation options.

The TruPunch 3000 can handle all of the tasks of modern sheet metal processing effortlessly and is ready for automated operation.



TruPunch 5000: Productive for high quality parts.

The TruPunch 5000 satisfies the most demanding requirements for productivity and part quality. It can be completely automated and features scratch-free processing.



It's
the
technology.



MultiShear ensures perfectly cut edges.

A good head for punching.

The TruPunch punching head always holds just one tool. No matter which one is loaded, the punching head can rotate any tool 360° to any angle, regardless of its shape, size or placement in the magazine. The benefits are obvious. Fewer tools are needed and unnecessary tool changes eliminated. Your costs are lower and your production is more economical. At the same time, part quality is increased since nibbling is unnecessary. If that isn't enough, the 360° rotation simplifies the process of designing parts and programming the machine – you no longer have to worry about which tools can be rotated and which cannot.

The electro-hydraulic punching head functions with extreme energy efficiency because the punching force control automatically determines the punching force required for each stroke. Small holes are punched with less force, keeping the energy consumption of the machine at an optimal rate.

The punching head has even more advantages: the long guide in the ram is virtually wear-free and ensures precise results. The integrated spray lubrication protects your tools while the active head return ensures process reliability. The presser foot prevents deformation of the sheet during processing.





The original TRUMPF punching tools.



One MultiTool integrates up to ten punches.

TRUMPF has decades of experience in punching technology and offers the widest selection of tools on the market.

Deburring technology:

Workpieces are deburred directly on the machine in one step. The principle is simple: the burr is displaced and the edge bevelled. It even works with coated parts, since the coating is not harmed in the deburring process.

MultiBend:

With the MultiBend function, you can bend high-quality strips up to 25 mm tall and 55 mm long faster than on any press brake.

MultiShear:

MultiShear cuts edges so smoothly they are virtually indistinguishable from laser-cut edges, but at the low costs you expect from punching.

Roller technology:

Wheel tools are especially fast – whether you are cutting, offsetting or beading. With 360° rotation technology, wheel technology is even possible for circles and curves.

MultiTool:

MultiTool tools can hold up to ten punches. With these tools you can perform several processing steps without a tool change. This saves space in the magazine as well as time, because you don't have to retrofit and change tools as frequently.

Special tools:

Special tools that prevent scratching, as well as tools for embossing and marking indelible workpiece identification, complete the assortment of tools available.

Accessories:

We offer a number of resources to make tool handling easier. QuickSet aligns the tools and measures their length. QuickSharp sharpens punches and dies for the next job.

Set-up virtually takes care of itself.

Our tools are quickly assembled from the punch, stripper and die and then loaded into a cartridge. Then the pre-loaded cartridges are simply inserted in the easily accessible linear magazine. Since all of the magazine stations have a standard design, any type and size of tool or clamp can be loaded in any station. Set-up errors are immediately noticeable – not only because you have all of the tools in view at all times, but also because the machine automatically checks where the tools and clamps are located before the program runs.

Both stable and accessible.

The design principle of all TruPunch machines is an open C frame, which makes both the machine and workpiece accessible from three sides. There is plenty of room for loading and unloading the machine – manually or automatically. The machine and the accompanying work table are highly stable which prevents inaccuracies.

Fast, easy tool loading.





The control panel keeps the entire process in view.

Sorting with certainty.

When you can unload workpieces quickly, you increase process reliability. With TruPunch, the programmable parts chute sends the workpieces straight to the finished parts bins. The process can also be assisted using a push-out tool. A vacuum sucks chips and punching slugs safely into the chip container.

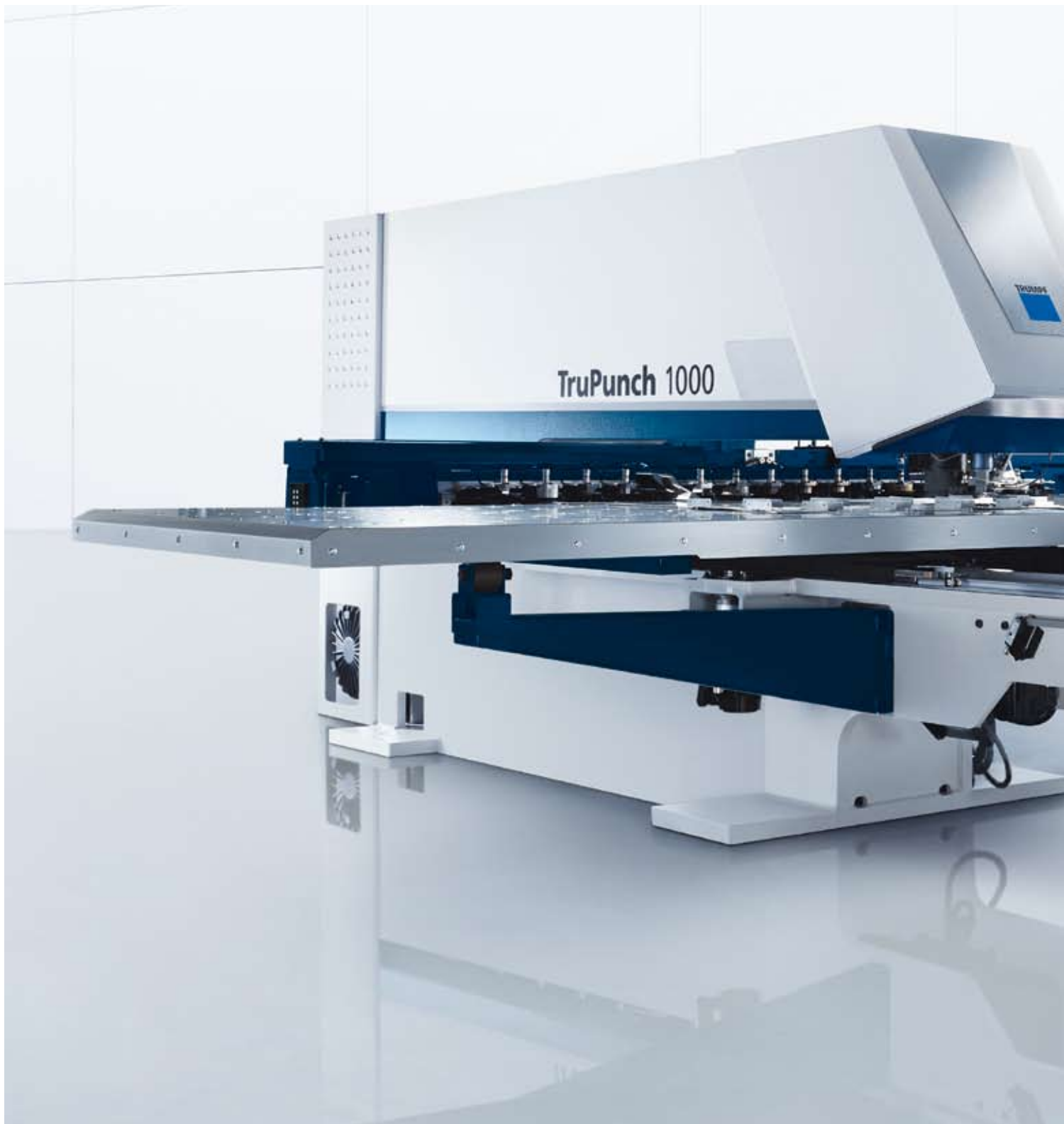
Everything under control.

The control system on your TruPunch makes things easy. A clearly organized menu provides the relevant information for every operation. The online help answers questions as they arise. And, if that should ever prove insufficient, our Teleservice will link up with your machine through the integrated modem. We'll figure out the problem and find a quick solution, so downtime is resolved quickly. Direct access to the TRUMPF E-Shop is available at the machine, enabling you to order spare parts and archive orders, so your history is always available at a glance.



TruPunch 1000





	TruPunch 1000 Small format	TruPunch 1000 Medium format		TruPunch 1000 Small format	TruPunch 1000 Medium format
Working range (X x Y)	2,070 x 1,280 mm	2,500 x 1,280 mm	Max. accelerations¹		
Capacities			X axis	10 m/s ²	10 m/s ²
Max. sheet thickness	6.4 mm	6.4 mm	Y axis	4.5 m/s ²	4.5 m/s ²
Max. punching force	165 kN	165 kN	C axis	200 1/s ²	200 1/s ²
Active presser foot	17 kN	17 kN	Tools		
Max. workpiece weight	150 kg	150 kg	Linear magazine	15 tools with 2 clamps	18 tools with 2 clamps
Speeds				(optional 3 rd clamp)	(optional 3 rd clamp)
X axis	80 m/min	80 m/min	No. with MultiTool	15 – 150	18 – 180
Y axis	55 m/min	55 m/min	MultiTool	2/5/10	2/5/10
Simultaneous (X and Y)	97 m/min	97 m/min	Tool change times		
C axis	180 rpm	180 rpm	Single tool	4.4 s	4.4 s
Max. stroke rate punching (E = 1 mm)	600 1/min	600 1/min	MultiTool	2.2 s	2.2 s
Max. stroke rate marking approx.	1,300 1/min	1,300 1/min			

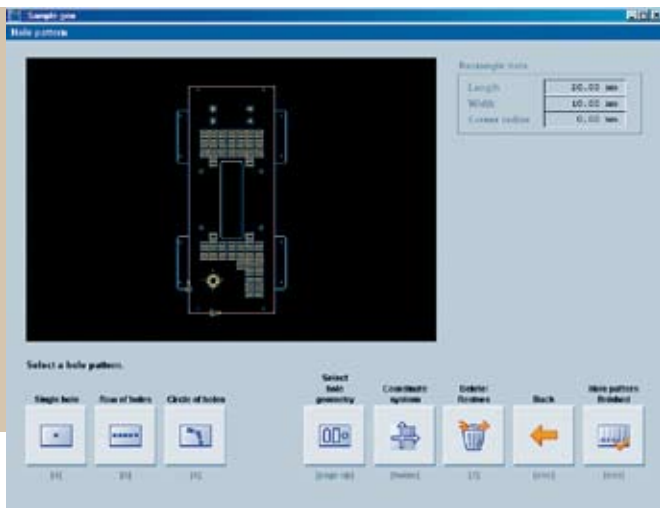


	TruPunch 1000 Small format	TruPunch 1000 Medium format
Accuracy²		
Positioning accuracy	± 0.1 mm	± 0.1 mm
Repeatability	± 0.03 mm	± 0.03 mm
TRUMPF CNC Control	Bosch PNC	Bosch PNC
Programmable parts chute		
Max. part size with rigid chute	180 x 150 mm	180 x 150 mm
Max. part size with support table	460 x 500 mm	460 x 500 mm
Space requirements³		
Including safety enclosures	6,000 x 5,825 mm	6,550 x 5,837 mm
Electrical power consumption		
Average power consumption, approx.	7 kW	7 kW
Standby operation, approx.	0.7 kW	0.7 kW

¹ Up to 100 kg sheet weight.

² The achievable accuracy in the workpiece depends on, among other things, the type of workpiece, pre-treatment, sheet size and its position in the work area. According to VDI/DGQ 3441. Measuring length 1 m.

³ Approximate values. The exact data can be found in the latest installation plan.



Self-explanatory buttons make programming simple.

Simple programming.

You can program the TruPunch 1000 yourself – even with very little prior experience. It comes with a navigation guide which guides you through the proven TruTops Punch Basic software. With its help, typical, non-complex parts can be programmed quickly and confidently. For more complex parts, the full version of TruTops Punch is also at your disposal at the touch of a button.

Punching perfection.

The TruPunch 1000 makes your work as easy as possible and has all of the capabilities you expect from a TRUMPF punching machine.

Punching for beginners and advanced users.

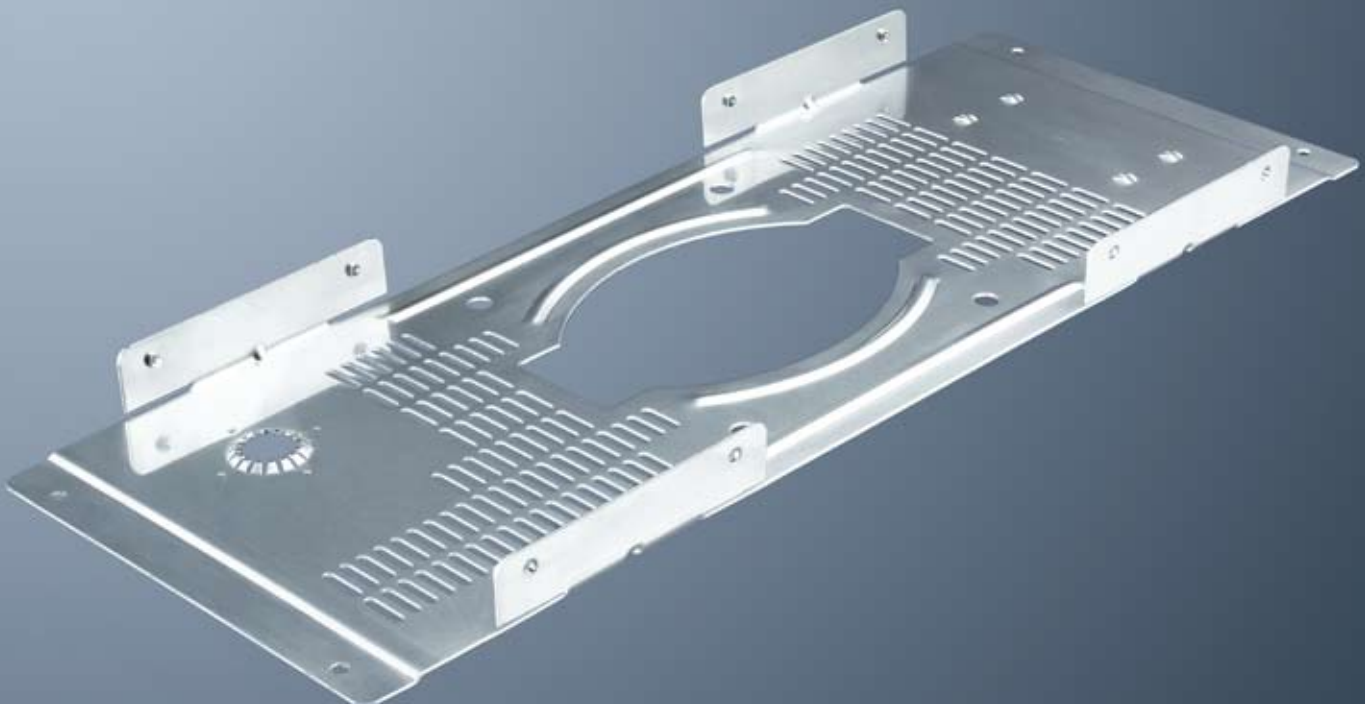
The TruPunch 1000 is the ideal starter machine. It can facilitate your entry into CNC sheet metal fabrication or be the perfect addition to an existing fleet of machines. Either way, it provides flexibility and makes it easy to respond to smaller orders and lot sizes.

Hassle-free operation.

Never before has a punching machine been so easy to operate. The TruPunch 1000 is controlled with a touch screen featuring a newly designed user interface. The menu system guides you through each step of the operation displaying all relevant information.

Easy retrofits.

Our maintenance-free, modular switch cabinet is plug-and-play, so the machine can be retrofitted without a service technician. Any electrician can easily add and connect new modules in any available slot – the machine will automatically detect the new component the next time it is started up.



TruPunch 2020





Working range (X x Y)¹ 2,540 x 1,270 mm

Capacities

Max. sheet thickness 6.4 mm
 Max. punching force 180 kN
 Active presser foot 4 – 17 kN
 Max. workpiece weight 150 kg

Speeds

X axis 90 m/min
 Y axis 60 m/min
 Simultaneous (X and Y) 108 m/min
 C axis 180 rpm
 Max. stroke rate punching (E = 1 mm) 900 1/min
 Max. stroke rate marking approx. 2,200 1/min

Max. accelerations²

X axis 12 m/s²
 Y axis 8 m/s²
 C axis 200 1/s²

Tools

Linear magazine 19 tools
 No. with MultiTool 19 – 190
 MultiTool 2/5/10

Tool change times

Single tool 3.5 s
 MultiTool 0.9 s

Accuracy³

Positioning accuracy ± 0.1 mm
 Repeatability ± 0.03 mm



TRUMPF CNC Control	Bosch PNC
Programmable parts chute	
Max. part size	180 x 200 mm
Space requirements⁴	
Including safety enclosures	7,440 x 6,450 mm
Electrical power consumption	
Average power consumption, approx.	9 kW
Standby operation, approx.	0.7 kW

¹ Without repositioning.

² Up to 100 kg sheet weight.

³ The achievable accuracy in the workpiece depends on, among other things, the type of workpiece, pre-treatment, sheet size and its position in the work area. According to VDI/DGQ 3441. Measuring length 1 m.

⁴ Approximate values. The exact data can be found in the latest installation plan.



Automatic loading and unloading.

The TruPunch 2020 gives you complete confidence for completing small and medium production runs quickly and efficiently.

The integrated, space-saving automation unit loads the machine with blank sheets and unloads the Micro-Joint sheets.

Micro-Joint technology produces punched parts that remain connected to the sheet skeleton by small tabs.



TruPunch 3000





	TruPunch 3000 Medium format	TruPunch 3000 Large format		TruPunch 3000 Medium format	TruPunch 3000 Large format
Working range (X x Y)¹	2,550 x 1,280 mm	3,070 x 1,660 mm	Max. accelerations²		
Capacities			X axis	12 m/s ²	12 m/s ²
Max. sheet thickness	6.4 mm	6.4 mm	Y axis	6 m/s ²	5 m/s ²
Max. punching force	180 kN	180 kN	C axis	175 1/s ²	175 1/s ²
Active presser foot (programmable in steps)	4.5 – 20 kN	4.5 – 20 kN	Tools		
Max. workpiece weight	150 kg	230 kg	Linear magazine	19 tools with 2 clamps	22 tools with 3 clamps
Speeds			No. with MultiTool	19 – 190	22 – 220
X axis	90 m/min	90 m/min	MultiTool	2/5/10	2/5/10
Y axis	60 m/min	60 m/min	Tool change times		
Simultaneous (X and Y)	108 m/min	108 m/min	Single tool	3.1 s	3.1 s
C axis	180 rpm	180 rpm	MultiTool	0.6 s	0.6 s
Max. stroke rate punching (E = 1 mm)	900 1/min	780 1/min			
Max. stroke rate marking approx.	2,200 1/min	2,200 1/min			



	TruPunch 3000 Medium format	TruPunch 3000 Large format
Accuracy³		
Positioning accuracy	± 0.1 mm	± 0.1 mm
Repeatability	± 0.03 mm	± 0.03 mm
TRUMPF CNC Control	Bosch PNC	Bosch PNC
Programmable parts chute		
Max. part size	500 x 500 mm	500 x 500 mm
Space requirements⁴		
Including safety enclosures	5,800 x 6,900 mm	6,300 x 7,900 mm
Electrical power consumption		
Average power consumption, approx.	8.3 kW	8.3 kW
Standby operation, approx.	0.7 kW	0.7 kW

¹ Without repositioning.

² Up to 100 kg sheet weight.

³ The achievable accuracy in the workpiece depends on, among other things, the type of workpiece, pre-treatment, sheet size and its position in the work area. According to VDI/DGQ 3441. Measuring length 1 m.

⁴ Approximate values. The exact data can be found in the latest installation plan.

Ready for anything.

Sheet metal offers designers nearly unlimited possibilities. With the TruPunch 3000 you are optimally prepared for rising demands in complexity, quality and speed. The TruPunch 3000 masters all challenges brilliantly.



Fast.

The punching head on the TruPunch 3000 is very fast. It effortlessly achieves 900 strokes per minute for punching and 2,200 for marking operations. The punch, stripper and die are monitored by a sensor. The tool change takes just 3.1 seconds. With MultiTool, the tool change can be accomplished within an astounding 0.6 seconds.

Maintenance free.

Our modular switch cabinet is plug-and-play, so the machine can be retrofitted without a service technician. Any electrician can easily add and connect new modules in any available slot – the machine will automatically detect the new component the next time it is started up.

Finished workpieces are discharged through the parts chute.



TruPunch 5000





	TruPunch 5000 Medium format	TruPunch 5000 Large format		TruPunch 5000 Medium format	TruPunch 5000 Large format
Working range (X x Y)¹	2,550 x 1,280 mm	3,070 x 1,660 mm	Max. accelerations²		
Capacities			X axis	20 m/s ²	18 m/s ²
Max. sheet thickness	8 mm	8 mm	Y axis	10 m/s ²	9 m/s ²
Max. punching force	220 kN	220 kN	C axis	350 1/s ²	350 1/s ²
Active presser foot (programmable in steps)	4.5 – 20 kN	4.5 – 20 kN	Tools		
Max. workpiece weight	200 kg	230 kg	Linear magazine	18 tools with 3 clamps	21 tools with 4 clamps
Speeds			No. with MultiTool	18 – 180	21 – 210
X axis	100 m/min	100 m/min	MultiTool	5/10	5/10
Y axis	60 m/min	60 m/min	Tool change times		
Simultaneous (X and Y)	116 m/min	116 m/min	Single tool	< 3 s	< 3 s
C axis	330 rpm	330 rpm	MultiTool	0.7 s	0.7 s
Max. stroke rate punching (E = 1 mm)	1,400 1/min	1,200 1/min			
Max. stroke rate marking approx.	ca. 2,800 1/min	ca. 2,800 1/min			



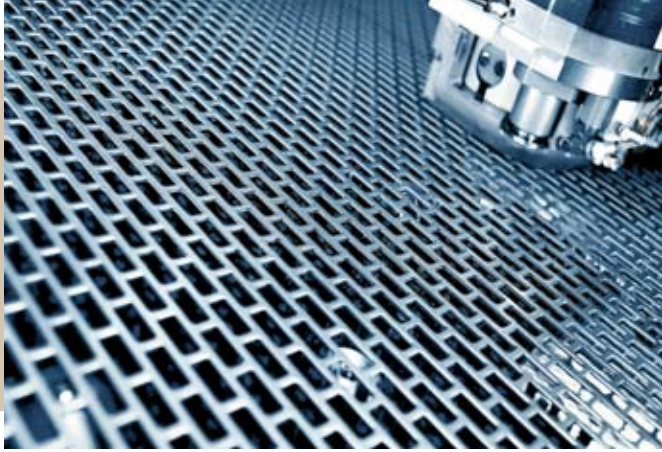
	TruPunch 5000 Medium format	TruPunch 5000 Large format
Accuracy³		
Positioning accuracy	± 0.1 mm	± 0.1 mm
Repeatability	± 0.03 mm	± 0.03 mm
TRUMPF CNC Control	Siemens Sinumerik 840D	Siemens Sinumerik 840D
Programmable parts chute		
Max. part size	500 x 500 mm	500 x 500 mm
Space requirements⁴		
Including safety enclosures	6,760 x 6,100 mm	7,600 x 7,000 mm
Electrical power consumption		
Average power consumption, approx.	11.2 kW	11.2 kW
Standby operation, approx.	0.7 kW	0.7 kW

¹ Without repositioning.

² Up to 100 kg sheet weight.

³ The achievable accuracy in the workpiece depends on, among other things, the type of workpiece, pre-treatment, sheet size and its position in the work area. According to VDI/DGQ 3441. Measuring length 1 m.

⁴ Approximate values. The exact data can be found in the latest installation plan.



Punching, newly defined.

With the TruPunch 5000, punching becomes the alternative to laser cutting. Its productivity is impressive with an active die that enables scratch-free processing. When the sheet is positioned, the active die moves down so that the sheet has no contact with the die and is not scratched. This is true for punching and forming dies with strippers.

In addition, the active die opens new possibilities for your punching and forming processes. It enables forming from the bottom up. There is also a clear advantage when forming from the top down. Since the die is not in the way, you can process larger forms in the sheet.

The active die also prevents the forms from getting caught in the die when the sheet is positioned. For this reason, programming is simplified because the die no longer needs to be considered as an interfering contour. Since the sheet lies flat, you can punch closer to the clamps, making better use of your material.



Faster punching.

The TruPunch 5000 punches at up to 1,400¹ strokes per minute and marks at 2,800 strokes per minute. That is a world record. The C axis accelerates and rotates the tools in any position at up to 330 revolutions per minute. Contours and threads can be processed in record time. Even in the thinnest sheets with a narrow kerf.

Higher productivity.

It is the acceleration values that make the TruPunch 5000 so efficient. We achieve these by using light components and tool cartridges. Then there are the newly designed, water-cooled drives. The X axis accelerates at more than 2 g to a maximum speed of 100 m/min. Another special feature is the gantry drive on the Y axis. Two highly efficient motors are synchronously controlled with no mechanical connection to provide high travel speeds. Fast tool changes make the TruPunch 5000 the most productive punching machine in the world.



Intelligent details.

The control panel makes the TruPunch 5000 easy to operate. The color monitor keeps you constantly informed about every process on the machine. The user-friendly interface is based on the familiar Windows® operating system. You can begin processing after just a few steps.

The presser foot makes it possible to process sheets with delicate surfaces without scratching, and can be manually adjusted to apply just the right amount of force. With the optional StripLine process, the presser foot can even be programmed to vary the force from one stroke to another. The machine automatically detects sheet thickness tolerances and compensates for them with adaptive stroke calibration. This makes it possible to achieve outstanding processing results even when the sheet thickness varies.

† 1,400 strokes/min in the medium format version, 1,200 strokes/min in the large format version.



Automation:

Components that pay off.



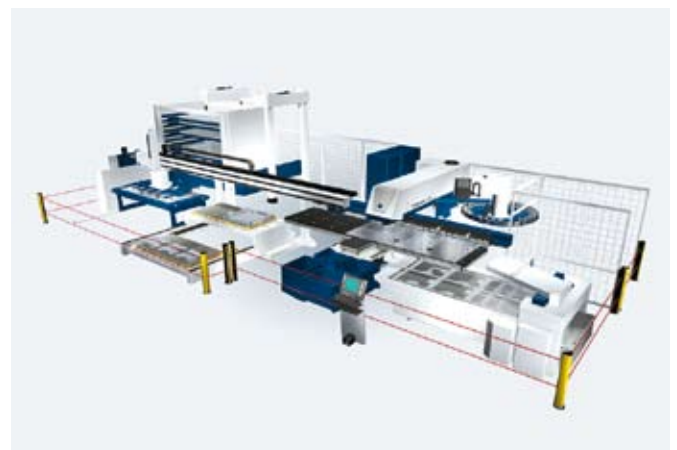
Our automation components lower your turnaround times – and costs. With precision timing they load raw materials and unload sorted, finished workpieces. Minimal set-up time means more flexibility for completing orders. You can easily cover break times or run additional shifts as needed. Automation eliminates the risk of operator error, improving workpiece quality.



Fully automated.

The illustration shows a fully automated TruPunch machine. You can store raw material in the TRUMPF compact storage facility and use a cart to place and remove materials from storage. The materials are removed by a loading cart. The SheetMaster takes individual sheets from the cart and loads the machine. During processing, the ToolMaster mounts other tools when needed into the linear magazine of the machine without operator intervention. Small finished parts are sorted into the four containers of the SortMaster Box through the machine's parts flap.

Large or delicate parts are removed by the SheetMaster with the help of suction cups and are sorted on the pallets of the belt driven cart system. This carries the pallet to the desired position. Its track lies at a 90-degree angle to the track of the SheetMaster. After processing, the ShearMaster pulls the sheet skeleton from the machine, breaks it into pieces and collects them in a manageable container.

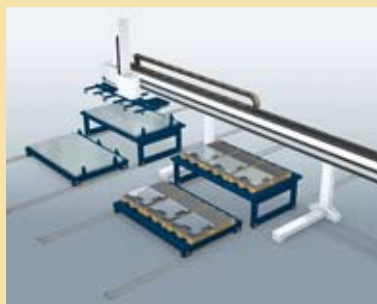


What goes with what?



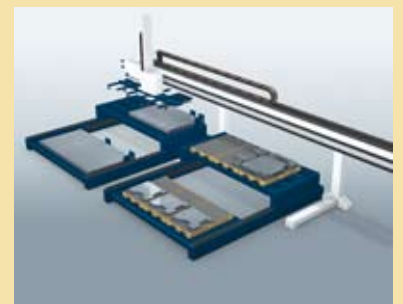
SheetMaster

The SheetMaster loads raw sheets onto the machine and unloads finished workpieces. For this operation, it uses suction cups mounted on a frame. Their arrangement corresponds to the typical sheet sizes, but can be adapted to specific part geometries.



Cart system with rails

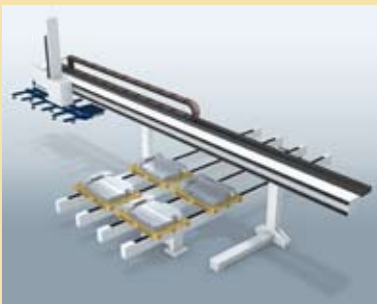
The cart system with rails enables flexible solutions for supplying raw material. You can deposit, stack or sort finished parts onto the cart. The tracks can be installed either above or under the floor. You can also adapt the length and orientation of the tracks to your specifications.



Cart system with belt drive

Cart systems with belts travel on floor-mounted carriers. Consequently, no floor work is required for installation or track relocation. Setup is quick and easy.

Actions	Loading and unloading	Loading and unloading	Loading and unloading
Sheet sizes¹	2,500 x 1,250 mm 3,000 x 1,500 mm 4,000 x 1,650 mm	1,500 x 3,000 mm 2,500 x 1,250 mm 3,000 x 1,500 mm 4,000 x 1,650 mm	2,000 x 1,250 mm 3,000 x 1,500 mm
Punching machines²	TruPunch 2020 ³ TruPunch 3000 TruPunch 5000	TruPunch 3000 TruPunch 5000	TruPunch 3000 TruPunch 5000



SortMaster Pallet

The SortMaster Pallet sorts and stacks finished workpieces onto four or six euro-pallets that can be positioned lengthwise or crosswise. You can load and unload pallets with an elevating cart.

Unloading and sorting

TruPunch 3000
TruPunch 5000



SortMaster Box

Small workpieces can be sorted into four different containers with the SortMaster Box. As soon as a part is removed from the machine, the right container moves under the parts flap. After every 90° turn, you can remove the containers with an elevating cart. Containers can also be replaced with box pallets.

Unloading and sorting

TruPunch 3000
TruPunch 5000



GripMaster

The GripMaster pulls the scrap skeleton from the machine onto a scissors table. The scrap skeletons can be simply and conveniently disposed of by tiltable pallet. The GripMaster requires no additional programming.

Unloading

2,500 x 1,250 mm
3,000 x 1,500 mm
4,000 x 1,650 mm

TruPunch 3000
TruPunch 5000



ShearMaster

The ShearMaster simplifies the disposal of scrap material by cutting the sheet skeleton into smaller manageable pieces. The pieces drop into a container and can be disposed of easily. You can upgrade the ShearMaster by adding a conveyor belt that automatically transports the cut-up scrap. This is especially beneficial for unmanned multiple shift operations.

Unloading and shredding sheet skeleton

2,500 x 1,250 mm
3,000 x 1,500 mm
4,000 x 1,650 mm

TruPunch 5000



ToolMaster

The ToolMaster allows you to hold either 40 or 70 tools outside of the linear magazine and equip them on your TruPunch with the machine control. In this manner, previously occupied magazine space is cleared and replaced with a new tool in under 9 seconds.

Storing and mounting tools

TruPunch 5000



Storage technology

Our modular storage solutions make your work easier thanks to clear interfaces and simple operation. The storage solutions permit the implementation of different formats, loading heights and payloads.

Storage

2,500 x 1,250 mm
3,000 x 1,500 mm
4,000 x 2,000 mm

TruPunch 3000
TruPunch 5000

¹ Possible sheet formats depend on the machine format.

² The TruPunch 3000 with automation is available only in medium format.

³ The SheetMaster of the TruPunch 2020 differs from the figure that is shown above.



Our experienced project engineers really know their business: in sheet metal processing and material flow, in transport, warehouse and control technology, and of course in customer consulting. As an experienced single-source supplier, we provide comprehensive turnkey solutions, including programming and process control.

TruServices:

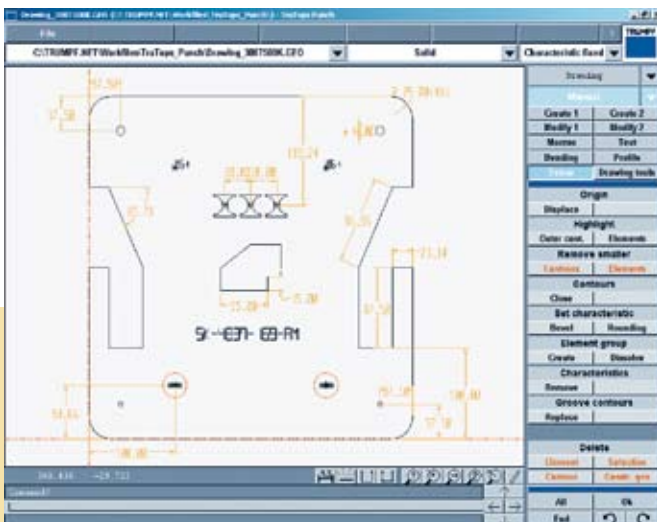
Programmed for success with TruTops.

We developed our TruTops Punch software specifically for punching. From inception to the finished part, it fully utilizes all of TRUMPF's expertise. It works well with our automation components and is intuitive and easy to use.

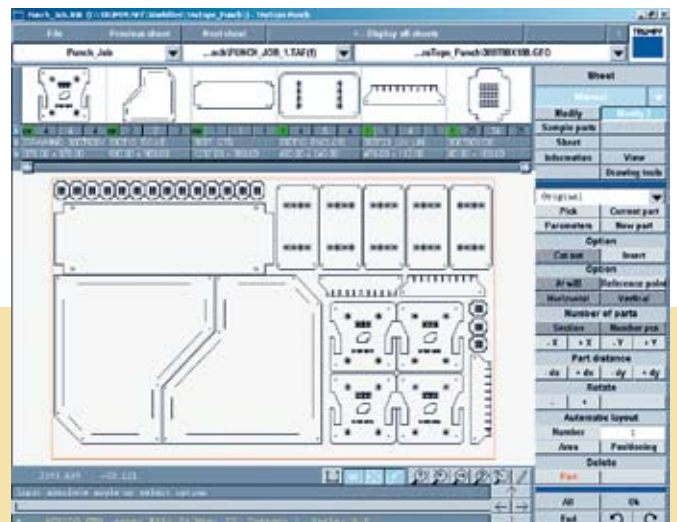
Just three steps to the NC program.

In the first step, existing production drawings are imported from your 2D or 3D CAD system or drawn using TruTops Punch. Macros for frequently used or unusual geometries make producing a drawing fast and efficient. TruTops Punch automatically closes open contours, deletes duplicate drawing elements and cleans up rough contour transitions.

Step 1: Generating the drawing.



Step 2: Setting up the sheet layout.





In the second step, optimized sheet layouts are created automatically or manually with TruTops Punch. This ensures maximum processing speeds. The nest processor calculates the best possible sheet layout for the individual parts. Even in manual layout mode there are numerous automation features to assist you. Fast reliable sheet layouts are as easy as can be.

Since the TruTops Punch software knows every detail of every TruPunch machine, it can find the fastest processing sequence. It defines the punching of single holes and complete contours. TruTops Punch automatically makes shared separation cuts between the workpieces as needed. Finished parts are discharged through the parts chute or unloaded by the SheetMaster automation component – TruTops Punch selects the right suction and ensures that the finished parts are stacked correctly. The software is just as methodical in planning the loading and sheet skeleton removal processes.

In the third step, the software automatically creates the finished NC program and sends it to the machine. Along with the NC program, TruTops Punch generates easy-to-read set-up plans with detailed processing times and tooling information. Multiple NC programs can be combined into a single production plan for automated production.

For its hardware platform, TruTops Punch requires only a standard PC with the Windows® operating system. The software can be integrated with the facility's internal network and linked with the TruPunch through the online connection.

TruServices:

We are
there
for you.

Guidance right from the start.

In addition to punching tools and software we offer you a large variety of services that begin even before you decide on a TruPunch. We provide comprehensive consulting services so together we can figure out which machine you really need. And, we will be happy to help you dispose of your old machine on request.

Money matters.

TRUMPF has many different financing and leasing options to offer you when buying a TruPunch. Leasing eases your liquidity and does not incur investment taxes. Leasing is also balance-sheet-neutral. It has no effect on your balance sheet figures, an important factor in your credit rating under the Basel II agreement.

It's a go.

After delivery, your TruPunch is up and running in no time at all. Because the machine, programming and tools all come from a single source, there are no interface problems to worry about.





Comprehensive support.

TRUMPF supports you throughout the life cycle of your machine and beyond with services that are made to order. We maintain the machine and retrofit it with new options when desired. We train you and your employees so that you can take advantage of the full potential of your TruPunch machine. When needed, we optimize the machine parameters on site and help

you to improve parts cost, production speed and quality. If necessary, our service specialists can link directly to your machine through a modem, with your permission, and access the control system – keeping downtime and technician visits to a minimum. And, if you ever need spare parts we are there for you around the clock, 365 days a year.



TRUMPF is certified according to DIN EN ISO 9001 and VDA 6.4