

TruLaser:

Cost-effective  
cutting through  
thick and thin.



# Up to the challenge.

## Contents

Up to the challenge. _____	2
The versatility to meet all your requirements. _____	4
Focused knowledge. _____	6
<b>TruLaser Series 1000</b> _____	8
<b>TruLaser Series 2000</b> _____	12
<b>TruLaser Series 3000</b> _____	16
<b>TruLaser Series 5000</b> _____	20
<b>TruLaser Series 7000</b> _____	24
<b>TruLaser Series 8000</b> _____	28
Automation that pays off. _____	32
Software: Programmed for success. _____	34
TruServices: Service like no other. _____	35

When you choose TRUMPF you choose the most expedient entry into the world of laser cutting. As the world market leader, TRUMPF provides everything from a single source: machine, laser, automation, software and services. Our comprehensive product range in the sheet metal processing chain is supported by a large international service network.

Whatever your requirements, our innovative technology will provide you with the most cost-effective solution. Our equipment is so easy to operate that even with no experience you will quickly be able to cut the highest quality parts and benefit from the great advantages of the laser beam: complete contour freedom for cutting an extremely wide range of material types and thicknesses.

## TruLaser: Benefits at a glance.

- 1** The most cost-efficient solution for every requirement.
- 2** The most innovative laser cutting technology.
- 3** Extremely easy to operate.
- 4** Wide choice of contours, sheet thicknesses and materials.
- 5** Everything from a single source: machine, laser, automation, software, services.

*You can find out more about TruLaser at [www.trumpf-machines.com/TruLaser](http://www.trumpf-machines.com/TruLaser)*



### TruLaser Series 1000

**Low-cost, compact and operator-friendly machines.** These compact space-saving machines are not only impressive because of their extremely low investment and operating costs, but they are also amazingly easy to operate.



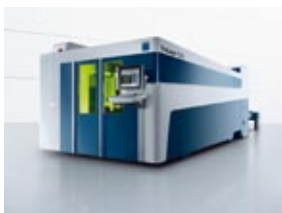
### TruLaser Series 2000

**Machines with linear material flow.** The compact dimensions and integrated automation of these systems deliver excellent quality in thin sheet cutting.



### TruLaser Series 3000

**Standard universal machines.** The flexibility and reliability of these genuine all-round talents is exceptional.



### TruLaser Series 5000

**Productive machines.** These powerhouses set high standards of productivity and cost efficiency.



### TruLaser Series 7000

**High-precision machines for mass production.** Equipped with two cutting heads, these machines produce parts in parallel: the best way to achieve maximum productivity at the highest level of precision.






### TruLaser Series 8000

**Flexible oversize format machines.** These machines deliver highest cost efficiency and excellent parts quality in the oversize range.

# The versatility to meet all your requirements.

## TRUMPF lasers.

TRUMPF offers a range of different laser types and power outputs to precisely meet your processing needs. Each of our lasers has its own distinctive and convincing strengths in different areas of application.

	TruFlow CO <sub>2</sub> lasers	TruCoax CO <sub>2</sub> lasers	TruDisk solid-state lasers
			
	<p>With power outputs of up to 7,000 W TruFlow universal lasers cut all sheet metal thicknesses reliably, productively and with high quality.</p>	<p>Thanks to their diffusion cooling, the low-maintenance TruCoax lasers consume very little laser gas while delivering precise cutting results and excellent edge quality in thin sheet.</p>	<p>For these rapid thin sheet specialists, the laser beam is guided through an optical fiber, which means they can offer an inexpensive entry into laser welding in a networked setup.</p>
Application focus	<b>Universal</b> —————> <b>Thin sheet</b>		
TruLaser Series 1000		■	
TruLaser Series 2000		■	
TruLaser Series 3000	■		
TruLaser Series 5000	■		■
TruLaser Series 7000	■		■
TruLaser Series 8000	■		

## Intuitive operation.

Machine operation is learned quickly and easily. This keeps the cost of training to a minimum. Installation, maintenance and programming are also user-friendly, and all the machines are easy to access.

## Great flexibility for different contours, sheet thicknesses and materials.

With a laser you can cut any contour in a variety of materials and sheet thicknesses.

## The most innovative laser cutting technology.

TRUMPF invests in your ongoing success. Our expenditure on research and development is twice as high as the industry average. Our innovative products and features regularly set new standards that take you to the top in laser processing, such as our single cutting head strategy and our mirror cutting head.

## efficiency+

We strive to work cost-efficiently and responsibly through our sensible use of resources.

- Power-saving laser standby mode.
- Minimal gas consumption thanks to tiny nozzle diameters.
- Highly efficient cooling units.
- Recovery of energy from the drives.
- Re-use of heat with universal cooling interface.

*You can find out more about efficiency+ at [www.trumpf.com/efficiencyplus](http://www.trumpf.com/efficiencyplus)*

# Focused knowledge.

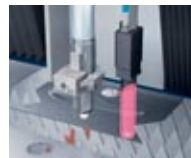
Productivity, high quality and reliability – these useful options will help you to improve your workflow.

## ► BrightLine



This superior cutting system features special cutting nozzles that produce the highest quality cuts in thick stainless steel. The smoothness and squareness of the cut edge are much better than in a standard cut. No finishing is required.

## ► DetectLine



The intelligent camera system scans sheets in process very accurately and determines their precise position. The machine can also use this data to detect parts which have already been cut, in order to process them further with absolute precision. In addition, DetectLine automatically adjusts the focus position.

## ► ContourLine



ContourLine makes it possible to accurately cut contoured holes with diameters much smaller than the material thickness. A pulsed beam system controls the introduction of heat into the material.

## ► Single cutting head strategy



You no longer have to take the time to change the cutting head, thereby reducing unproductive downtime – especially so when processing various materials in automated operations.

## ► ControlLine



Sensors keep the distance between the cutting nozzle and the sheet metal constant – even if the sheet is uneven. Good cut quality is guaranteed. In addition, ControlLine determines the position of the sheet and adjusts the cutting program, eliminating the need for manual position corrections.

## ► FastLine



FastLine pre-adjusts and retains all parameters in the transition from piercing to cutting. This increases your productivity by up to 100 %, depending on the material and number of contours. The system automatically penetrates at a lower laser output and gradually increases to the required cutting power.

- ✓ Quality
- ↻ Process reliability
- ↗ Productivity

#### ▶ FlyLine



The cutting head travels at high speed in a line-by-line sequence over the entire sheet metal. The control system switches the beam on and off and cuts all contour sections in the respective path. This processing strategy reduces time spent on traversing and positioning, especially when cutting perforated grids.

#### ▶ LensLine



LensLine immediately switches the beam off if the focusing lens is affected by dirt. This prevents the lens from thermally decomposing, and the beam guidance remains clean. The condition of the lens is automatically checked on the mounted cutting head enabling you to clean the lens as required and not as a precaution.

#### ▶ FocusLine



An adaptive mirror in the beam guidance system makes it possible to adapt the focus position automatically to the material type and thickness. The result: maximum processing speed and excellent edge quality without manual adjustments – across the entire surface and material spectrum.

#### ▶ NitroLine



This technique introduces nitrogen at very high pressure to produce oxide-free edges. As a result, you can cut thicker sheets and achieve very high cutting speeds in stainless steel and aluminum.

#### ▶ High-speed cutting



A special cutting head selectively introduces metal vapor plasma to significantly increase cutting speed.

#### ▶ PierceLine



PierceLine monitors and controls the piercing process. This reduces stress on the material and machine and shortens pierce time by up to 80%.

#### ▶ Laser output control



The laser power output is automatically adapted to the cutting speed. This ensures optimum cut quality even on sharp corners and small contours.

#### ▶ PlasmaLine



If plasma forms when thick sheets are being cut, the control system reduces the feed speed or stops the axis motion. The beam is not interrupted, meaning PlasmaLine ensures high process reliability and part quality.

# TruLaser Series 1000

Low-cost, compact and operator-friendly machines.

These compact, space-saving machines are not only impressive because of their extremely low investment and operating costs, but they are also amazingly easy to operate.



TruLaser Series 1000:  
Benefits at a glance.

- 1 Low investment and operating costs.
- 2 Very easy to operate.
- 3 Small footprint of only 25 m<sup>2</sup>.
- 4 Quick and easy installation.

Laser cutting for less.

**Low transport and space costs.**

Transporting the TruLaser 1030 is easy and therefore inexpensive. The machine is so compact that it is delivered in just one standard container. Its footprint of just 25 m<sup>2</sup> also saves you space costs.

**Minimum setup and installation costs.**

Installation time and expenditures are also reduced. The machine is ready to operate in just a few hours. In most cases you do not need a reinforced foundation. The machine's low weight requires a floor thickness of only 100 mm. Even floor anchors are not necessary.

### **Low training costs.**

The operating concept of the TruLaser 1030 is amazingly simple. The functions are similar to those on a CD player: Start, Stop, Pause. You will select the right keys intuitively. Even without any previous knowledge of laser cutting you will be able to operate the machine and therefore, keep training costs down to a minimum.

### **Simple to operate.**

The operating concept allows you to choose between a beginners' and a professionals' level. With the professionals' level, only the keys needed for fast part cutting are visible. The TruLaser 1030 is operated safely even if you have never used a laser machine before. At the professional level, you can adapt all of the technology values on your own without difficulty. The single head strategy reduces downtime and material handling includes a pull-out pallet that serves as a useful automation aid.



Easy and intuitive control.



Pull-out pallet.

Flying optics on the TruLaser Series 1000.





#### Technical data

		TruLaser 1030		
<b>Working range</b>			<b>Accuracy<sup>[1]</sup></b>	
X axis		3000 mm	Position deviation Pa	
Y axis		1500 mm	Average position range Ps	
Z axis		75 mm		
<b>Workpiece</b>			<b>Dimensions and weight<sup>[2]</sup></b>	
Max. weight		575 kg	Length	
<b>Max. speed</b>			Width	
Simultaneous		85 m/min	Height	
<b>TRUMPF CNC control</b>		B&R ARNC0	Weight	

<sup>[1]</sup> The attainable accuracy depends on, among other things, workpiece type, its pretreatment, sheet size, and position in the working area. In accordance with VDI/DGQ 3441, measured length 1 m.

<sup>[2]</sup> Approximate values. The exact figures can be obtained from the valid installation plan.

<sup>[3]</sup> Including suction, control, HF generator and cooling system, depending on the machining program.



TruLaser 1030		
Available lasers	TruCoax 2000	
Laser specifications	<b>TruCoax 2000</b>	
Max. power	2000 W	
Wavelength	10.6 μm	
Max. sheet thickness		
Mild steel	15 mm	
Stainless steel	6 mm	
Aluminum	5 mm	
Power consumption of the entire system <sup>[3]</sup>	8–59 kW	
0.1 mm		
0.03 mm		
7400 mm		
3300 mm		
2300 mm		
9000 kg		

# TruLaser Series 2000

## Machines with linear material flow.

The compact dimensions and integrated automation of these systems deliver excellent quality in thin sheet cutting.

## Automation included.

We designed the TruLaser 2025/2030 machines from the outset as compact, automated units with linear material flow. The combination of laser, machine and automation pays off. The material handling on this machine is simple and efficient. Raw material is automatically loaded and finished parts are reliably unloaded. The sheet always moves in the same direction.

## TruLaser Series 2000: Benefits at a glance.

- 1 Excellent edge quality in thin sheet.
- 2 Efficient linear material flow.
- 3 Integrated automation.
- 4 Great accessibility.
- 5 Compact setup.

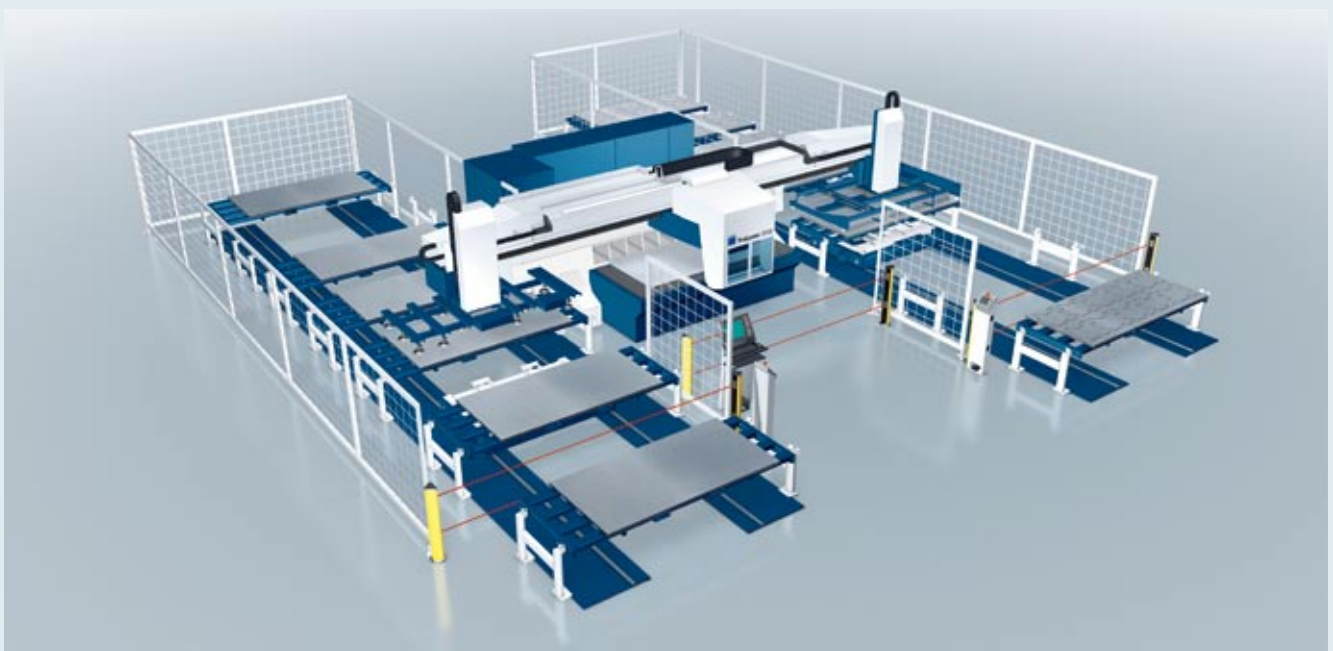
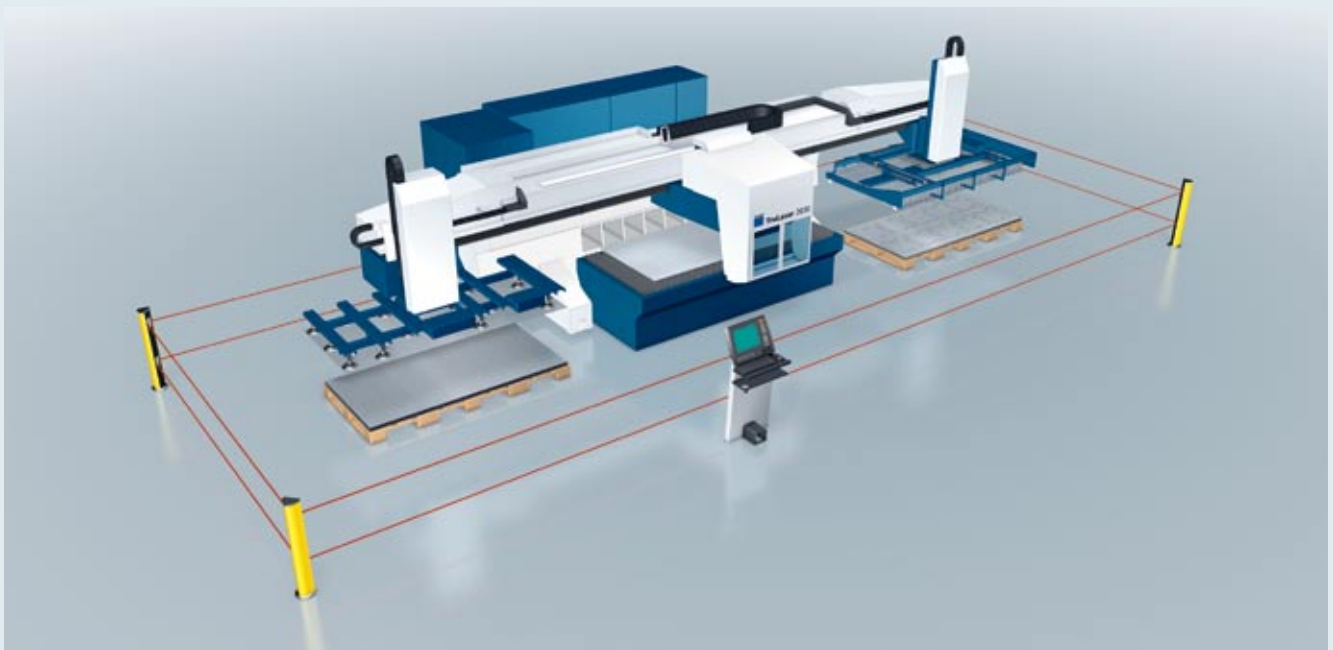
## Integrated standard automation.

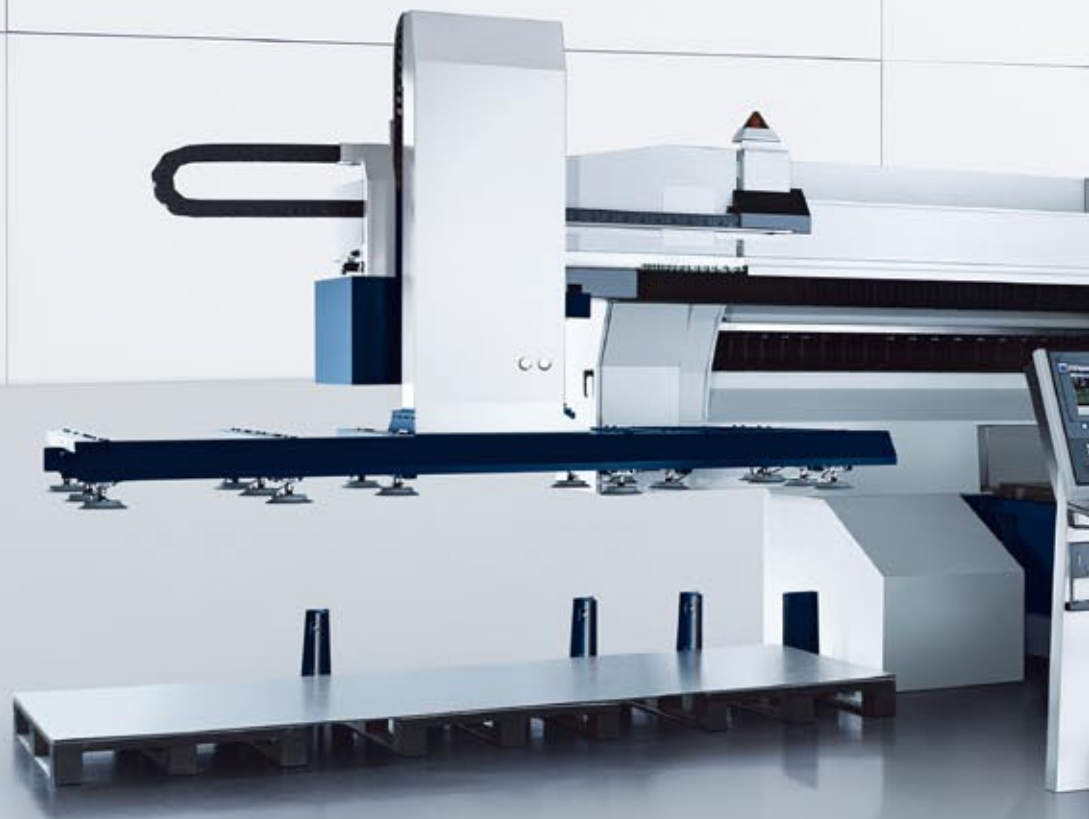
The suction frame loads the machine automatically from the sheet stack. The rake unit unloads finished parts reliably. Thanks to a maximum stacking height on both sides of 680 mm, the machine runs for a long time completely automatically.

## Maximum automation for continuous operation.

With up to six pallets on both sides you can process several orders using different material types continuously and reliably.

A rail system ensures that the right material always reaches the machine. Two platforms outside the safety area handle the sheets while the machine is cutting, which minimizes unproductive downtime.





#### Technical data

	TruLaser 2025	TruLaser 2030
<b>Working range</b>		
X axis	2500 mm	3000 mm
Y axis	1250 mm	1250/1500 <sup>[1]</sup> mm
Z axis	115 mm	115 mm
<b>Workpiece</b>		
Max. weight	390 kg	470/570 <sup>[1]</sup> kg
<b>Max. speeds</b>		
Simultaneous	170 m/min	170 m/min
<b>TRUMPF CNC control</b>	Siemens Sinumerik 840D	Siemens Sinumerik 840D
<b>Accuracy<sup>[2]</sup></b>		
Position deviation Pa	0.1 mm	0.1 mm
Average position range Ps <sup>[2]</sup>	0.03 mm	0.03 mm

<sup>[1]</sup> Figures for the enlarged configuration.

<sup>[2]</sup> The attainable accuracy depends on, among other things, workpiece type, its pretreatment, sheet size, and position in the working area. In accordance with VDI/DGQ 3441, measured length 1 m.

<sup>[3]</sup> Approximate values. The exact figures can be obtained from the valid installation plan.

<sup>[4]</sup> Including suction, control, HF generator and cooling system, depending on the machining program.



	TruLaser 2025	TruLaser 2030
<b>Dimensions and weight<sup>[3]</sup></b>		
Length	10500 mm	11400 mm
Width	5500 mm	5500/6400 <sup>[11]</sup> mm
Height	2750 mm	2750 mm
Weight	15000 kg	15100/15300 <sup>[11]</sup> kg
Available lasers	TruCoax 2000/3200	TruCoax 2000/3200

Laser data	TruCoax 2000	TruCoax 3200
Max. power	2000 W	3200 W
Wavelength	10.6 $\mu\text{m}$	10.6 $\mu\text{m}$

<b>Max. sheet thickness</b>		
Mild steel	12 mm	20 mm
Stainless steel	6 mm	10 mm
Aluminum	5 mm	8 mm

Power consumption of the entire system <sup>[4]</sup>	8–59 kW	8–72 kW
---	---------	---------

# TruLaser Series 3000

## Standard universal machines.

The flexibility and reliability of these genuine all-around machines is exceptional.

The TruLaser Series 3000 is based on a very simple operating and maintenance concept. Employing the single cutting head strategy for all sheet thicknesses means that the cutting head does not have to be changed. In addition, the adjustable control panel features convenient touch operation that will guide you intuitively through the program. Just a few touches on the screen will take you where you need to be. These machines also combine utility with an attractive design.

## Convenient maintenance.

Components requiring maintenance are clearly indicated. They are located centrally on the machine for easy access. This makes maintenance even easier, enabling you to get back to productive operation more quickly.

## TruLaser Series 3000: Benefits at a glance.

- 1 First-class processing flexibility.
- 2 High cutting speeds and minimal downtime.
- 3 Low and easy maintenance.
- 4 Simple to operate.
- 5 Various automation options.



Optimal cutting through thick and thin.

## Options to increase your flexibility.



The optional nozzle changer switches nozzles automatically.



RotoLas enables you to quickly change over to tube processing.



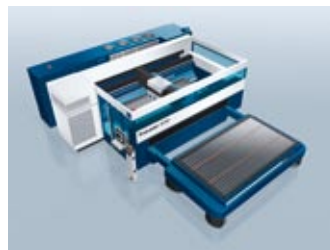
The transverse position of the pallet changer reduces the machine footprint by about 20%.

## TruLaser 3030 Lean Edition: Grows with your business.

Small, then not so small: This machine is a size-reduced version of the TruLaser 3030 (L20) which you can expand to meet increasing production needs. It features an ergonomic pull-out pallet with pallet guides that can be folded in and out of the way – an excellent alternative to the pallet changer.



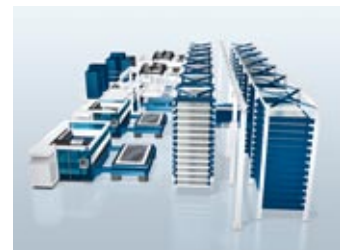
With pull-out pallet.



With automatic pallet changer.



With pallet changer and LiftMaster Compact.



With automated storage facility.



Technical data						
	TruLaser 3030	TruLaser 3040	TruLaser 3060	TruLaser 3030 Lean Edition		
<b>Working range</b>						
X axis	3000 mm	4000 mm	6000 mm	3000 mm		
Y axis	1500 mm	2000 mm	2000 mm	1500 mm		
Z axis	115 mm	115 mm	115 mm	115 mm		
<b>Workpiece</b>						
Max. weight	900 kg	1700 kg	1900 kg	710 kg		
<b>Max. speeds</b>						
Simultaneous	140 m/min	140 m/min	85 m/min	140 m/min		
<b>TRUMPF CNC control</b>						
	Siemens Sinumerik 840D SL	Siemens Sinumerik 840D SL	Siemens Sinumerik 840D	Siemens Sinumerik 840D SL		
<b>Accuracy<sup>[1]</sup></b>						
Position deviation Pa	0.1 mm	0.1 mm	0.1 mm	0.1 mm		
Average position range Ps <sup>[1]</sup>	0.03 mm	0.03 mm	0.03 mm	0.03 mm		
<b>Dimensions and weight<sup>[2]</sup></b>						
	Lengthwise position of the pallet changer					
Length	9300 mm	12000 mm	16100 mm	6500 mm		
Width	4600 mm	5300 mm	5200 mm	5600 <sup>[3]</sup> /7100 mm		
Height	2200 mm	2200 mm	2000 mm	2200 mm		
	Transverse position of the pallet changer					
Length	6500 mm	–	–	–		
Width	7600 mm	–	–	–		
Height	2200 mm	–	–	–		
Weight	12000 kg	14000 kg	21500 kg	12000 kg		
<b>Available lasers</b>						
	TruFlow 3200/4000/5000/6000	TruFlow 3200/4000/5000	TruFlow 2000/2700/3200/4000	TruFlow 3200		
<b>Laser data</b>						
	<b>TruFlow 2000</b>	<b>TruFlow 2700</b>	<b>TruFlow 3200</b>	<b>TruFlow 4000</b>	<b>TruFlow 5000</b>	<b>TruFlow 6000</b>
Max. power	2000 W	2700 W	3200 W	4000 W	5000 W	6000 W
Wavelength	10.6 µm	10.6 µm	10.6 µm	10.6 µm	10.6 µm	10.6 µm
<b>Max. sheet thickness</b>						
Mild steel	12 mm	15 mm	20 mm	20 mm	25 mm	25 mm
Stainless steel	4 mm	6 mm	12 mm	15 mm	20 mm	25 mm
Aluminum	3 mm	5 mm	8 mm	10 mm	12 mm	15 mm
<b>Power consumption of the entire system<sup>[4]</sup></b>						
	20–40 kW	23–50 kW	11/26 <sup>[5]</sup> –53 kW	11/32 <sup>[5]</sup> –65 kW	11–72 kW	11–89 kW

<sup>[1]</sup> The attainable accuracy depends on, among other things, workpiece type, its pretreatment, sheet size, and the position in the working area. In accordance with VDI/DGQ 3441, measured length 1 m.

<sup>[2]</sup> Approximate values. The exact figures can be obtained from the valid installation plan.

<sup>[3]</sup> Width during processing with pallet guides folded in.

<sup>[4]</sup> Including suction, control, HF generator and cooling system, depending on the machining program.

<sup>[5]</sup> For TruLaser 3060.

# TruLaser Series 5000

## Productive machines.

These powerhouses set high standards of productivity and cost efficiency.

The machines in the TruLaser Series 5000 offer convincingly high productivity and minimal downtime. This is achieved by dynamic drives and high axis speeds, along with functions such as the single cutting head strategy and the automatic nozzle changer. You also have a choice of laser – between the universal professional, TruFlow and the thin sheet metal specialist, TruDisk.

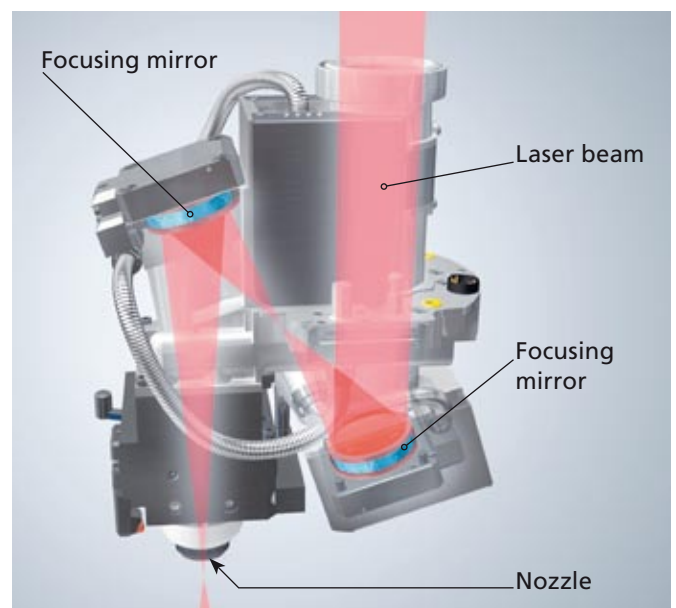
## Real powerhouses.

Our productive universal machines with the TruFlow laser effortlessly master thin and thick sheets. With power outputs of up to 7,000 W they can even cut through 30 mm thick stainless steel. You can configure your ideal machine from a variety of options. These include:

- **Mirror cutting head technology package – for robust and low-maintenance focusing without a lens.**
- **Nozzle changer – for automatic nozzle exchange.**

## TruLaser Series 5000: Benefits at a glance.

- 1 Highest productivity for thin sheet metal or universal cutting.
- 2 High axis speed and positioning dynamics.
- 3 Minimal downtime.
- 4 Great material variety.
- 5 Various automation options.



Mirror cutting head: cutting without a lens.

With the TruLaser 5030 fiber TRUMPF offers you the most cost-efficient solution for productive thin sheet processing. Thanks to its dynamic drive system the machine makes full use of the high feed rates delivered by the fiber-guided, energy-efficient TruDisk laser.

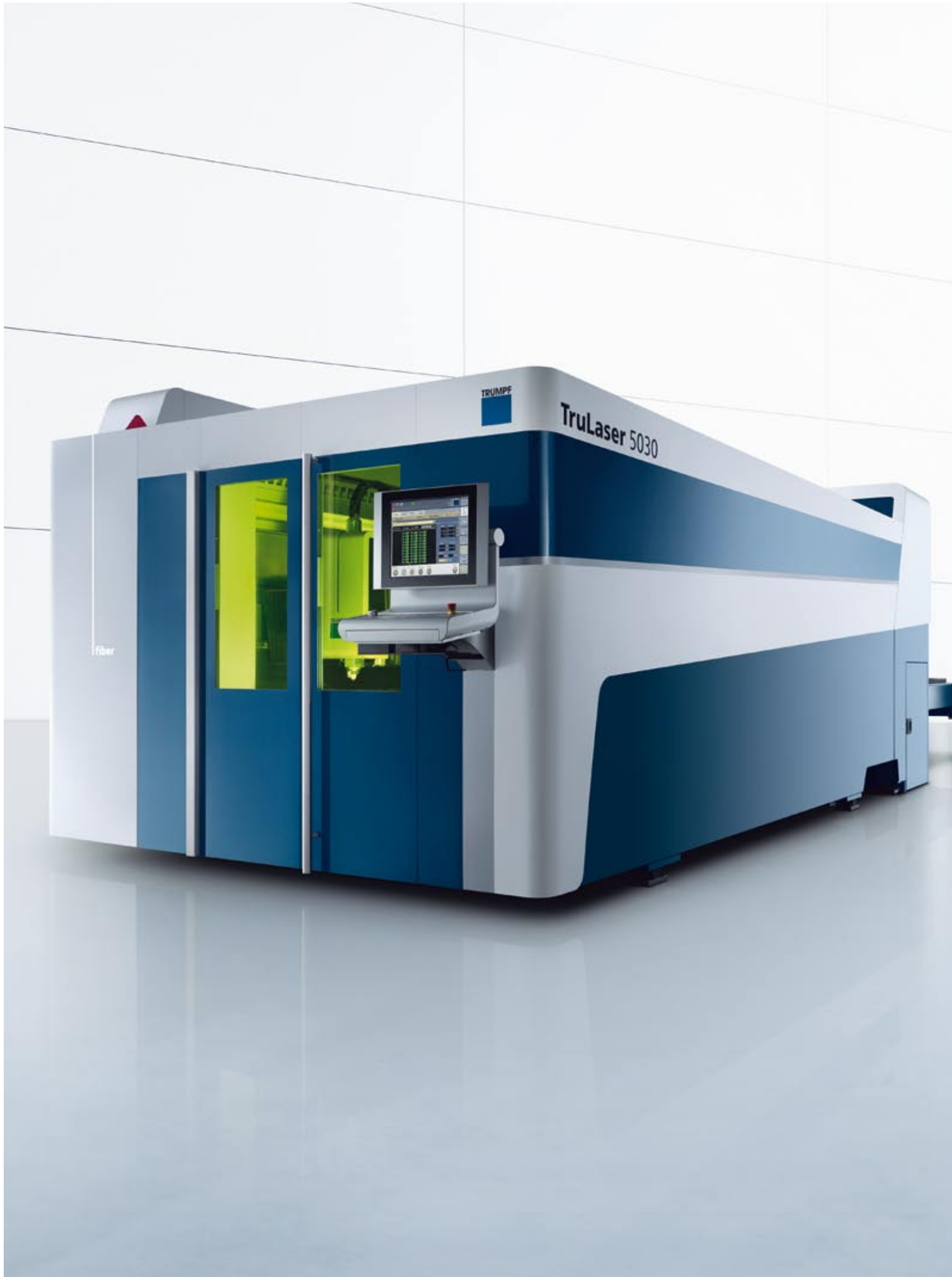


#### Benefits of a solid-state laser:

- Feed rates up to three times higher in thin sheet.
- Excellent energy efficiency.
- Material variety expanded to include copper and brass.
- Maintenance-free beam guidance.



TruLaser 5030 with TruFlow 7000.



Technical data				
	TruLaser 5030	TruLaser 5040	TruLaser 5060	TruLaser 5030 fiber
<b>Working range</b>				
X axis	3000 mm	4000 mm	6000 mm	3000 mm
Y axis	1500 mm	2000 mm	2000 mm	1500 mm
Z axis	115 mm	115 mm	115 mm	115 mm
<b>Workpiece</b>				
Max. weight	900 kg	1800 kg	2800 kg	900 kg
<b>Max. speeds</b>				
Simultaneous	300 m/min	300 m/min	300 m/min	235 m/min
TRUMPF CNC control	Siemens Sinumerik 840D	Siemens Sinumerik 840D	Siemens Sinumerik 840D	Siemens Sinumerik 840D SL
<b>Accuracy<sup>[1]</sup></b>				
Position deviation Pa	0.1 mm	0.1 mm	0.1 mm	0.1 mm
Average position range Ps <sup>[1]</sup>	0.03 mm	0.03 mm	0.03 mm	0.03 mm
<b>Dimensions and weight<sup>[2]</sup></b>				
Length	11100 mm	13000 mm	16950 mm	9400 mm
Width	4600 mm	5400 mm	5550 mm	3000 mm
Height	2400 mm	2400 mm	2400 mm	2400 mm
Weight	12000 kg	14000 kg	16000 kg	12700 kg
Available lasers	TruFlow 5000/6000/7000	TruFlow 5000/6000/7000	TruFlow 5000/6000/7000	TruDisk 3001

Laser data	TruFlow 5000	TruFlow 6000	TruFlow 7000	TruDisk 3001
Max. power	5000 W	6000 W	6000 W	3000 W
Wavelength	10.6 µm	10.6 µm	10.6 µm	1.03 µm

Max. sheet thickness				
Mild steel	25 mm	25 mm	25 mm	20 mm
Stainless steel	20 mm	25 mm	30 mm	15 mm
Aluminum	12 mm	15 mm	20 mm	15 mm
Copper	–	–	–	6 mm
Brass	–	–	–	6 mm

Power consumption for the entire system <sup>[3]</sup>	11 – 72 kW	11 – 89 kW	43 – 110 kW	13 – 29 kW
--	------------	------------	-------------	------------

<sup>[1]</sup> The attainable accuracy depends on, among other things, workpiece type, its pretreatment, sheet size, and the position in the working area. In accordance with VDI/DGQ 3441, measured length 1 m.

<sup>[2]</sup> Approximate values. The exact figures can be obtained from the valid installation plan.

<sup>[3]</sup> Including suction, control, HF generator and cooling system, depending on the machining program.

# TruLaser Series 7000

High-precision machines for mass production.

Equipped with two cutting heads, these machines produce parts in parallel: the best way to achieve maximum productivity at the highest level of precision.

Unrivalled productivity.

The idea behind these machines is as simple as it is brilliant – high productivity through linear drive technology combined with two laser cutting heads. Together with high acceleration and axis speed these machines achieve outstanding results. Their part throughput rate is three times higher than on single head machines, and part costs are considerably lower.

Each of the cutting heads on the x axis of the TruLaser 7025/7040 has its own TruFlow laser. Using just one cutting head is no problem – simply turn the other one off or select just one from the outset. Both modes of operation are possible.

TruLaser Series 7000:  
Benefits at a glance.

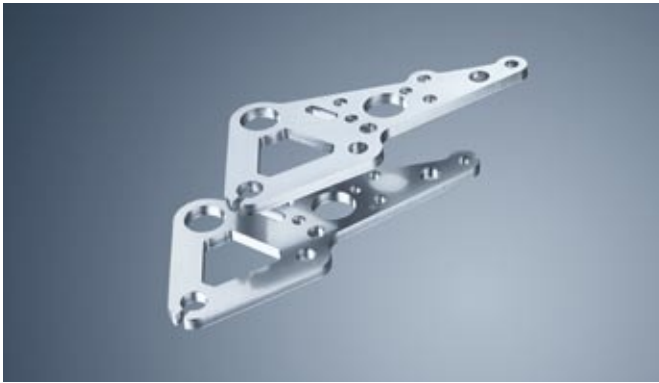
- 1 Maximum productivity with second cutting head.
- 2 Highest dynamics through motion unit made of carbon fiber.
- 3 Outstanding accuracy and part quality.
- 4 Great material variety.



Twice the productivity with two cutting heads.

## Unrivalled precision.

High-resolution, direct measuring systems in all axes, combined with precise laser control, ensure excellent accuracy. This makes this machine perfect for cutting detailed parts, such as electrical panels.



Bracket, stainless steel, 6 mm.



Electrical panel, structural steel, 0.5 mm.

The TruLaser 7025 fiber/7040 fiber machines are each equipped with a TruDisk 6001 solid-state laser. Thanks to their unique dynamics they make maximum use of the high feed rates of the solid-state laser in thin sheet. In dual head mode the laser beam divides, supplying each cutting head with 3,000 W of power output. Alternatively, you can use the full 6,000 W with one head.



### Benefits of the solid-state laser:

- Feed rates up to three times higher in thin sheet.
- Excellent energy efficiency.
- Material variety expanded to include copper and brass.
- Maintenance-free beam guidance.



#### Technical data

	TruLaser 7025	TruLaser 7040	TruLaser 7025 fiber	TruLaser 7040 fiber
<b>Working range</b>				
X axis	2500 mm	2500 mm	2500 mm	2500 mm
Y axis	1250 mm	4000 mm	1250 mm	4000 mm
Z axis	115 mm	115 mm	100 mm	100 mm
<b>Workpiece</b>				
Max. weight	500 kg	1600 kg	500 kg	1600 kg
<b>Max. speeds</b>				
Simultaneous	304 m/min	304 m/min	304 m/min	304 m/min
<b>TRUMPF CNC control</b>				
	Siemens Sinumerik 840D	Siemens Sinumerik 840D	Siemens Sinumerik 840D	Siemens Sinumerik 840D
<b>Accuracy<sup>[1]</sup></b>				
Position deviation Pa	0.05 mm	0.05 mm	0.05 mm	0.05 mm
Average position range Ps <sup>[1]</sup>	0.02 mm	0.02 mm	0.02 mm	0.02 mm

<sup>[1]</sup> The attainable accuracy depends on, among other things, workpiece type, its pretreatment, sheet size, and position in the working area. In accordance with VDI/DGQ 3441, measured length 1 m.

<sup>[2]</sup> Approximate values. The exact figures can be obtained from the valid installation plan.

<sup>[3]</sup> Including suction, control, HF generator and cooling system, depending on the machining program.

<sup>[4]</sup> When cutting with two lasers.



	TruLaser 7025	TruLaser 7040	TruLaser 7025 fiber	TruLaser 7040 fiber
<b>Dimensions and weight<sup>[2]</sup></b>				
Length	10200 mm	15800 mm	10200 mm	16800 mm
Width	8800 mm	7280 mm	8800 mm	8100 mm
Height	2860 mm	3090 mm	2860 mm	3500 mm
Weight	11600 kg	16500 kg	11600 kg	15000 kg
Available lasers	TruFlow 3200/3600	TruFlow 3200/3600/6000	TruDisk 6001	TruDisk 6001

Laser data	2x TruFlow 3200	2x TruFlow 3600	2x TruFlow 6000	TruDisk 6001
Max. power	2 x 3200 W	2 x 3600 W	2 x 6000 W	6000 W
Wavelength	10.6 µm	10.6 µm	10.6 µm	1.03 µm

<b>Max. sheet thickness</b>				
Mild steel	20 mm	20 mm	20 mm	20 mm
Stainless steel	12 mm	15 mm	20 mm	20 mm
Aluminum	8 mm	10 mm	15 mm	20 mm
Copper	–	–	–	6 mm
Brass	–	–	–	6 mm
Power consumption for the entire system <sup>[3]</sup>	38 – 76 kW <sup>[4]</sup>	42 – 92 kW <sup>[4]</sup>	65 – 150 kW <sup>[4]</sup>	11 – 33 kW

# TruLaser Series 8000

Flexible oversize format machines.

These machines stand for highest cost efficiency and excellent part quality in oversized format processing.

Strong, reliable and productive.

The TruLaser Series 8000 secures decisive advantages in oversized processing. With dynamic linear drives and proven TruFlow lasers you will achieve the highest cut quality. The patented solution for quick and precise pallet sequencing, combined with an intelligent monitoring and control system, guarantees reliable processes. As an option, you can double the productivity with a second cutting head.



Typical oversized part: 16 m longitudinal support for a truck.

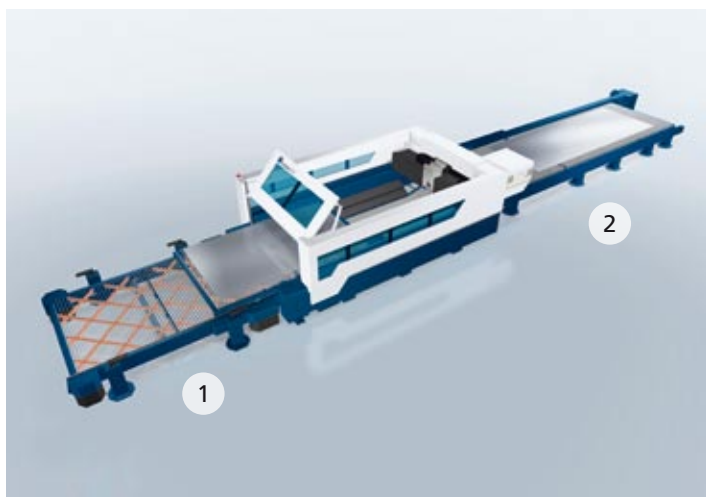
TruLaser Series 8000:  
Benefits at a glance.

- 1 Sheets up to 16 m in length.
- 2 Flexible selection of the pallet concept.
- 3 Smooth, seamless cutting of repositioned sheets.
- 4 Option: doubled productivity with a second cutting head.

Smart, controlled and precise.

Innovative processing strategies from TRUMPF provide the best quality assurance for your oversized format cutting. Control of the internal material stresses produces cuts without offset steps – for sheets up to 16 m in length. High-resolution, direct measurement systems in all axes ensure extremely accurate parts. With the precise laser control system you will be able to cut contours reliably in thick and thin sheet.

The TruLaser Series 8000 enables you to process sheets up to 16 m in length. The sheet is moved through the machine in several steps. Depending on how frequently you process oversized formats, choose the most cost-efficient concept for your pallet changer.



Flexible with an additional oversized format pallet.

Ideal when oversized formats account for **up to approx. 40 % of your work:**

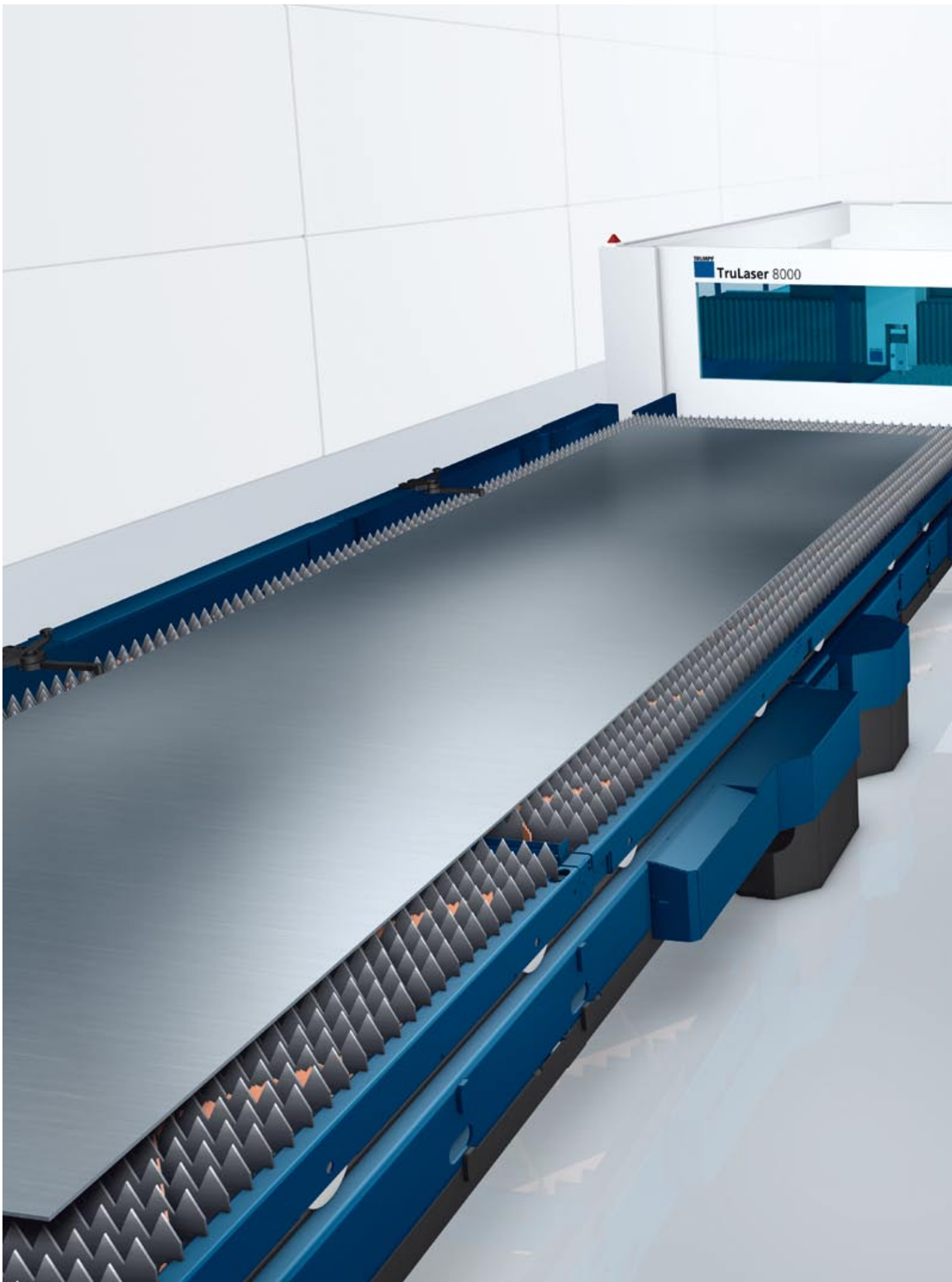
- For standard formats up to 4 m in length use the pallet changer (1) and automation for highest productivity.
- Increase your flexibility with the additional pallet (2) for sheets up to 16 m in length.

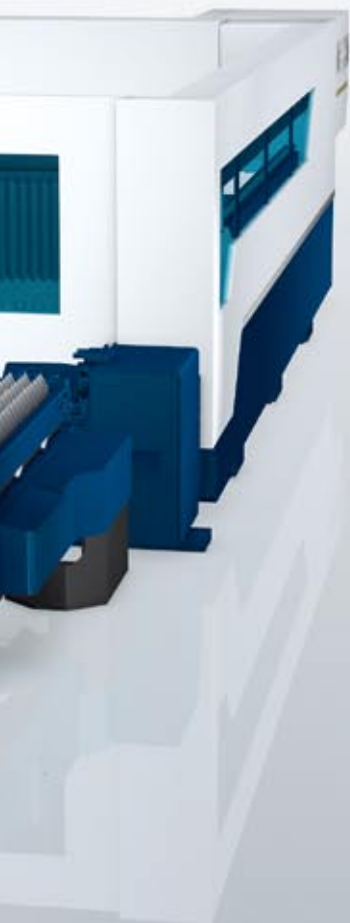


Highly productive with an oversized format pallet changer.

Ideal when oversized formats account for **more than approx. 40 % of your work:**

- Achieve maximum productivity for oversized formats up to 12 m in length by loading and unloading while the machine is cutting.
- Reduce cycle time to a minimum with the quick oversized format pallet changer.
- Produce cost-efficiently in unmanned operation with maximum process reliability.





Technical data		
TruLaser 8000		
<b>Working range</b>		
X axis	2500 mm	
Y axis	4000 mm	
Z axis	115 mm	
<b>Oversized format options</b>		
With 4000 x 2500 mm pallet changer and additional oversized format pallet	16000/14000/12000/10000/8000/6000 x 2500 mm	
With oversized format pallet changer	12000/8000/6000 x 2500 mm	
<b>Workpiece</b>		
Max. weight	Depends on selected pallet concept	
<b>Max. speeds</b>		
Simultaneous	304 m/min	
<b>TRUMPF CNC control</b>	Siemens Sinumerik 840D	
<b>Accuracy<sup>[1]</sup></b>		
Position deviation Pa	0.05 mm	
Average position range Ps <sup>[1]</sup>	0.02 mm	
Repeat accuracy of repositioning	± 0.1 mm	
Position accuracy of repositioning	± 0.2 mm	
<b>Dimensions and weight</b>	Depends on selected pallet concept	
<b>Laser data</b>		
	<b>TruFlow 3600</b>	<b>TruFlow 6000</b>
Max. power	3600 W	6000 W
Wavelength	10.6 µm	10.6 µm
<b>Max. sheet thickness</b>		
Mild steel	20 mm	20 mm
Stainless steel	15 mm	20 mm
Aluminum	10 mm	15 mm
<b>Power consumption for the entire system<sup>[2]</sup></b>	32–53 kW	58–88 kW

<sup>[1]</sup> The attainable accuracy depends on, among other things, workpiece type, its pretreatment, sheet size, and position in the working area. In accordance with VDI/DGQ 3441, measured length 1 m.

<sup>[2]</sup> Including suction, control, HF generator and cooling system, depending on the machining program.

# Automation that pays off.

Produce profitably and efficiently with automation options from TRUMPF.

- Everything from a single source – no interface problems.
- Optimized material flow and higher process reliability increase productivity.
- Capacity expanded by multi-shift operation for up to 24 hours a day with minimal personnel.
- Gentle handling increases material efficiency.
- Well organized storage speeds up material availability and saves space.

**Integrated loading and unloading unit** – automatic loading of raw material and unloading of finished parts.

**LoadMaster** – the entry into laser flatbed automation: simple, space-saving and low-cost loading of the pallet changer.

**LiftMaster** – the universal automation device for loading and unloading.

**LiftMaster Sort** – automatic loading and unloading as well as sorting of large parts.



**Possible machines:**

	Integrated loading and unloading unit	LoadMaster	LiftMaster	LiftMaster Sort	LiftMaster Compact
TruLaser Series 1000					
TruLaser Series 2000	■				
TruLaser Series 3000		■	■	■	■
TruLaser Series 5000		■	■	■	■
TruLaser Series 7000		■	■	■	
TruLaser Series 8000		■	■	■	

**LiftMaster Compact** – short cycle times and minimal space requirements thanks to rapid automation unit for loading and unloading.

**LiftMaster Linear** – efficient loading and unloading of up to three machines.

**LiftMaster Store** – particularly flexible loading and unloading because several transfer compartments are integrated directly in your storage facility.

**LiftMaster Store Linear** – complete solution for fully automatic production processes: loading and unloading of up to three machines with connected storage and individual cart systems.

**SortMaster** – flexible and cost-efficient sorting and unloading of finished small parts with 144 individually programmable suction cups.

**PalletMaster Tower** – flexible material handling around the clock: automated pallet changer combined with compact storage system.

**TruStore** – modular, expandable rack and storage system for well-organized, highly efficient utilization of space.

**Customized storage** – for special requirements we offer customized storage solutions in cooperation with our partners at Stopa.

LiftMaster Linear	LiftMaster Store	LiftMaster Store Linear	SortMaster	PalletMaster Tower	TruStore	Customized storage
						
						■
■	■	■	■	■	■	■
■	■	■	■		■	■
■	■	■	■		■	■
■	■	■	■		■	■

Software:

## Programmed for success.

### Programming: TruTops Laser.

#### **Efficient, process-reliable NC programs.**

With TruTops Laser you can program your TruLaser machines easily and reliably. Thanks to efficient nesting software and diverse setting options different parts are optimally arranged and placed on the metal sheet. In addition, the program ensures, that workpieces do not tilt, and prevents collisions.

You can further optimize material usage with built-in residual sheet management and efficient algorithms for utilization of common separation cuts. In addition, the laser output is individually adapted to each task and deployed as cost-efficiently as possible. This saves you money.

### Production control: TruTops Fab.

#### **Simply controlling your entire production.**

TruTops Fab is the modular complete solution for your production. Whether you want to optimize your infrastructure with individual modules or decide on a complete solution, TruTops Fab is set up to meet your requirements.

Individual software modules allow you to improve all processes in your company in the realm of production, administration and logistics. TruTops Fab is completely geared to actual practice in sheet metal processing – offering you an unrivalled competitive advantage.

#### TruTops Laser: Benefits at a glance.

- Fast and process-reliable NC programs.
- Short programming time.
- Highly efficient nesting.
- Direct optimization of part quality.
- Excellent utilization of laser power.

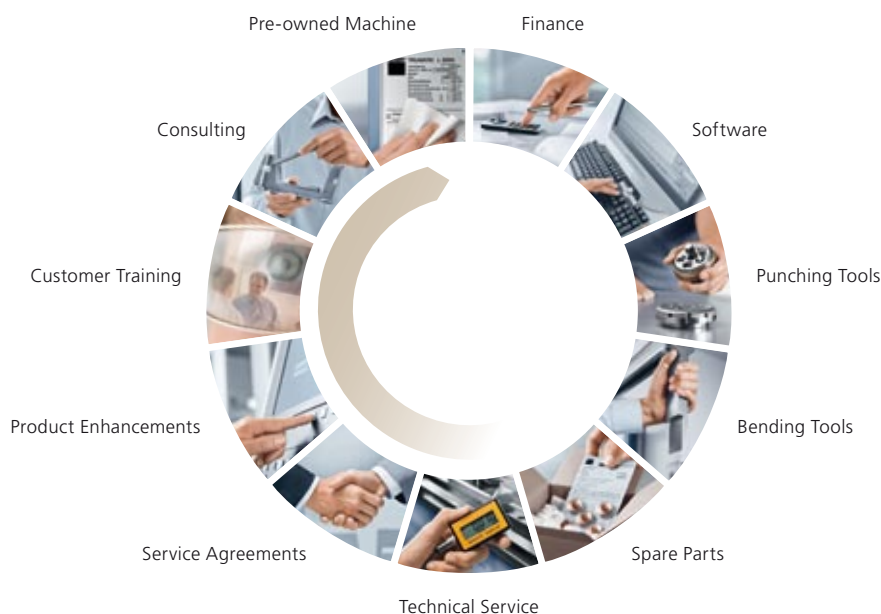
#### TruTops Fab: Benefits at a glance.

- Modular system to meet your needs.
- Individual user guidance.
- TruTops programming systems can be integrated without difficulty.
- Direct communication with controls.
- Easy exchange with ERP/PPS system.

TruServices:

Service like  
no other.

Throughout the lifecycle of your machine.



Regardless of the TRUMPF technology you use, you will always get the best service. And, thanks to TRUMPF's award-winning spare parts logistics, all parts can be shipped to you in the shortest time possible. TRUMPF Leasing offers you individual financing solutions quickly and without a lot of paperwork. Our service technicians are highly trained and always available when you need them. A Service Agreement is the ideal way of ensuring the best usability of your machine.

Should your requirements change, we have flexible upgrading options and technical innovations that will make your machine even better. Our broad range of training courses with experienced trainers and hands-on practice will also give you a head start in understanding and operating your machine.

*You can find out more about our services at [www.trumpf-machines.com/Services](http://www.trumpf-machines.com/Services)*

The TRUMPF Group ranks among the world's leading manufacturers of production technology and industrial lasers. Technical and efficient solutions for our customers have been our focus since 1923. As a leading technology supplier, TRUMPF is a one-stop shop for all of your technology needs: machines, automation, storage technology and services.

TRUMPF is certified according to ISO 9001:2008  
(for further information see [www.trumpf.com/en/company/quality](http://www.trumpf.com/en/company/quality))

Ident no. 0372714-30-10-10-F – Content subject to change without notice